

TP 400 PTO K

TP 400 is the optimal wood chipper for production of chips in professional forestry. It has an integrated crane column and the funnel parallel with the direction of traffic. The wood chipper is mounted in the tractor's 3-point suspension. TP 400 is for fast and effective chipping of wood of up to 400 mm in diameter. Effect need from 200 to 400 hp.

The high professional level on the TP 400 is evident both in the list of standard equipment, the high capacity of approximately 100 m³ per hour and the good chip quality. If you want an especially fine chip quality, for example for use in small stokers, the wood chipper can be equipped with sliver breakers in order to make the chips more uniform.

The service conditions have a lot of focus on TP 400 where the covers can be removed easily, just as the split rotor housing can be opened with a hydraulic pump so the access to the knives is fast and easy.

TP 400 is delivered as standard with a Stress Control System type TP PILOT K, where the user can operate the wood chipper's feeding system and monitor the rpm on the rotor and the feed rollers as well as reading the current temperature of the hydraulic oil.

Standard on TP 400

- Integrated high pressure hydraulics system
- Four knives (two-knife rotor)
- Two anvils in Hardox 400
- Two hydraulically powered feed rollers which ensure a powerful feeding
- Hydraulic cylinder for backstop of moving rollers
- V-belt drive between PTO and rotor
- Hydraulic tension of the V-belt drive
- Ejector spout over the tractor
- Wipers to ensure against accumulation of material in the rotor housing
- Changeable casing in rotor housing
- Split rotor housing with hydraulic opening
- Automatic adjustment of the roller speed with the TP PILOT K
- Rotor lock for securing the rotor disc when changing knives
- Crane support for mounting crane
- Stress Control System TP PILOT K
- Comprehensive manual with complete spare parts list



TP 100

TP 150

TP 200

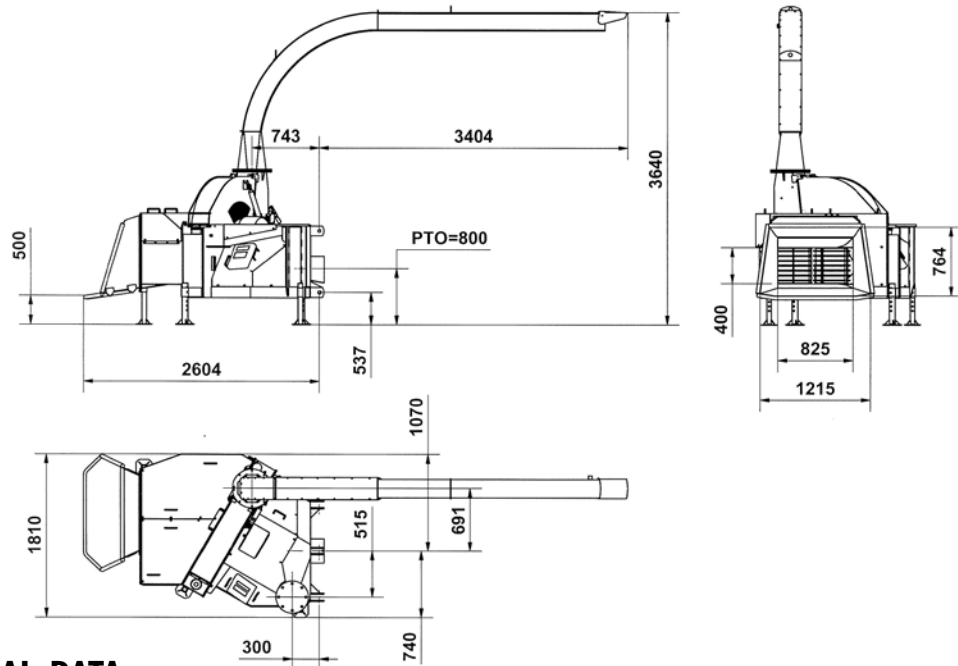
TP 250

TP 230

TP 270

TP 280

TP 400



TECHNICAL DATA

Max wood diameter	400 mm
Max opening	H x W = 400x440 mm
Operation	Return/forward/stop of feed rollers through operating bar (yellow)
Chipper principle	Disc
In feed angle	30°
Feeding	2 hydraulically powered feed rollers which ensure a powerful feeding
In feed	2 hydraulic feed rollers
Feed rollers	New developed feed rollers for extremely strong feeding
Rotordisc - diameter	1.225 mm
Rotordisc - Weight in kg	756
Number of knives	4 pcs. (2 cuts per turn)
Crane funnel	Parallel to driving direction. Big and open funnel in 6 mm plate with solid 40 mm frame
Crane	Crane flange for mounting of crane (fits to MOWI 400)
Chip lenght	20-40 mm. In hard wood max. 25 mm
Stress control system	TP PILOT K - complete box for installation in the tractors cabin
Anvil/Counter steel	1 vertical
Stress control system	TP PILOT K
Power required	147-294 kW (200-400 hp)
PTO rpm	1.000 rpm/min.
PTO shaft	Walterscheid with freewheel, length = 560 mm
3-point linkage	Category 3
Chip capacity	80-100 m³/hour (Experience numbers by manual operation)
Weight	3.000 kg (Excl. crane and crane support)

EXTRA EQUIPMENT

Short ejector spout	If the chips are not to be "throughn" across the tractor
Crane and crane control	We can offer different alternatives with MOWI cranes and operation
Sliverbreakers	Set with 4 pcs. - if special requirements for chip quality
Light bar	Light bar with complete set of rear lights